

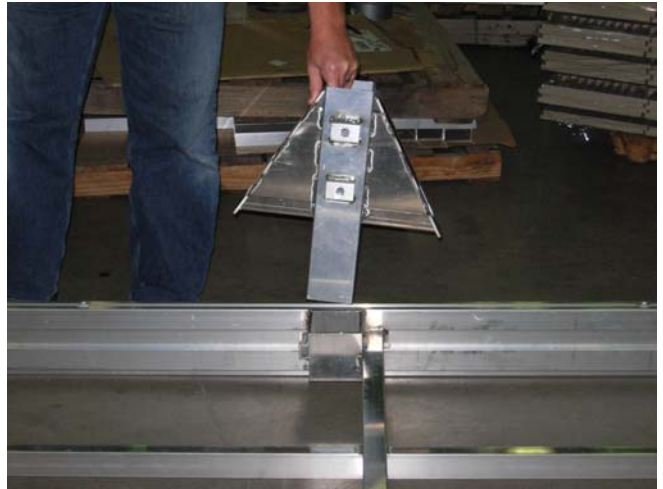
A-A

Dock Instructions for Lake End Section

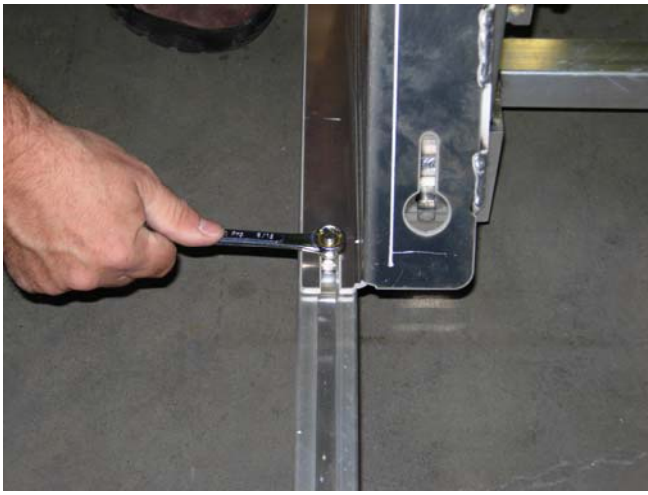


Step 1:
Start with dock upside down.
Insert 2 carriage bolts into the rail
and slide 1 past the pocket and 1
up to the pocket.

Step 2:
Insert the reinforcement bracket
into the pocket.

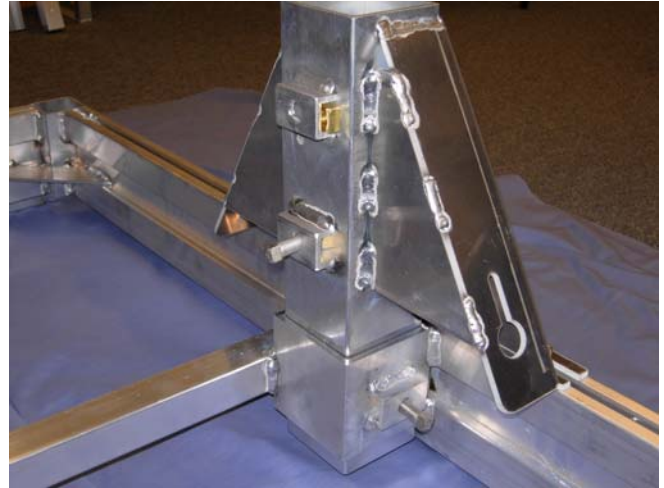


Step 3:
Slide each carriage bolt into the
slots on the bracket.



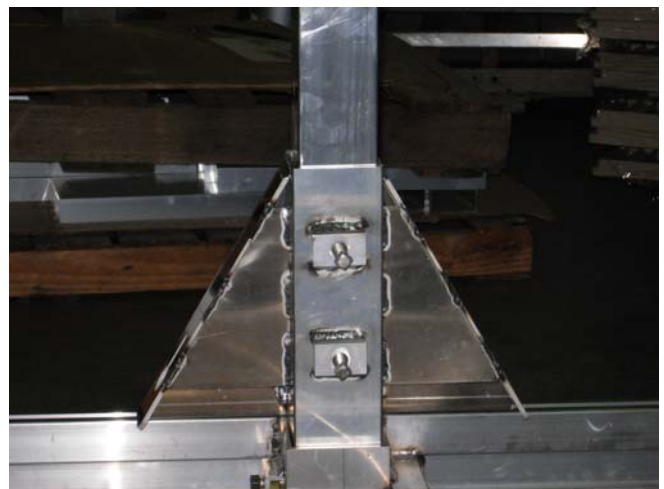
Step 4:
Tighten bolts using a 9/16”
wrench.

Step 5:
Insert 3 square nuts into channels
and thread set screws in about
1/2”.



Step 6:
Tighten the set screw on the dock
pocket only with a 1/2” wrench.

Step 7:
Insert screw leg into the leg
bracket.





Step 8:
Tighten both set screws on leg pocket to secure the leg with 1/2" wrench.

Step 9:
Put large washer on axle stub then place the tire on.



Step 10:
Add a large washer to outside of wheel and insert 5/16" bolt; use a flat washer, lock washer and nut and tighten.

Repeat for opposite side.

Step 11:
Check that all fasteners are tight.
Turn dock to upright position.

