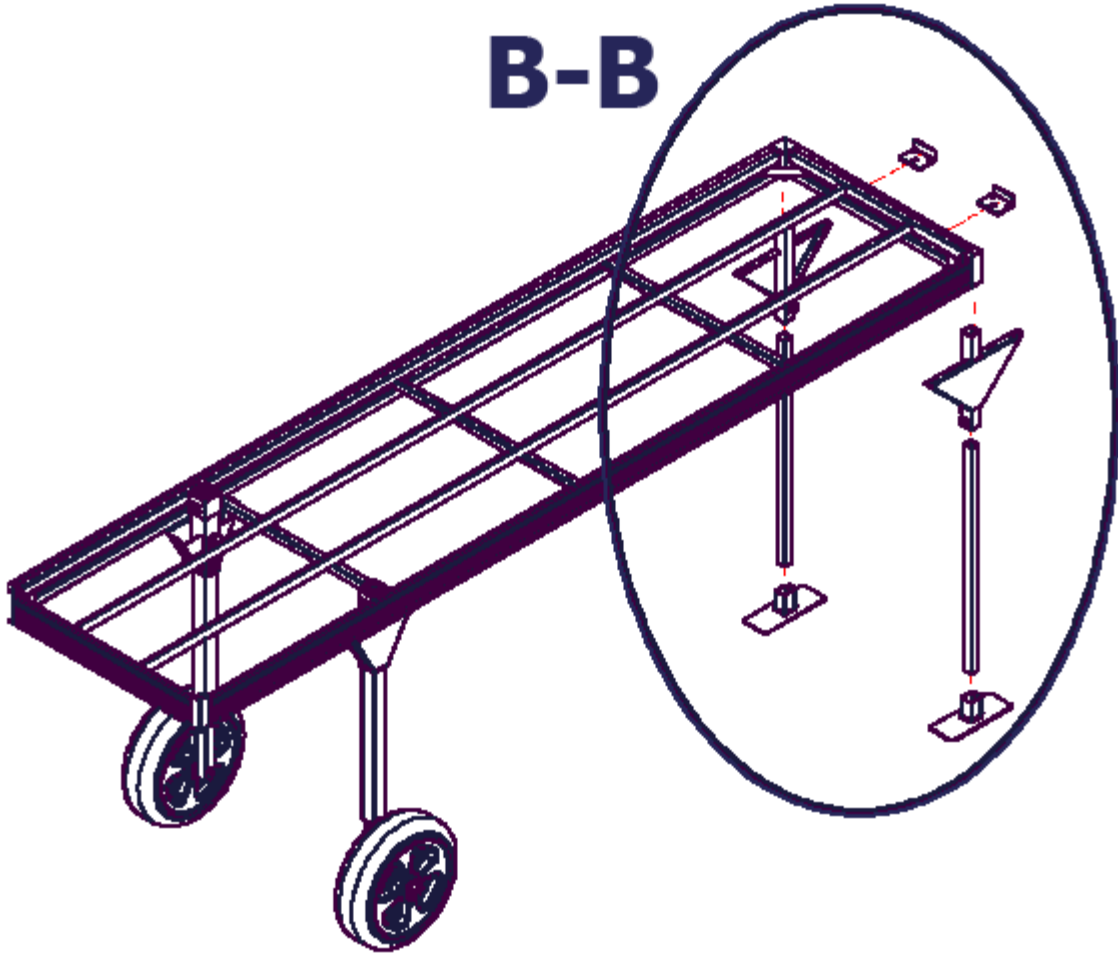
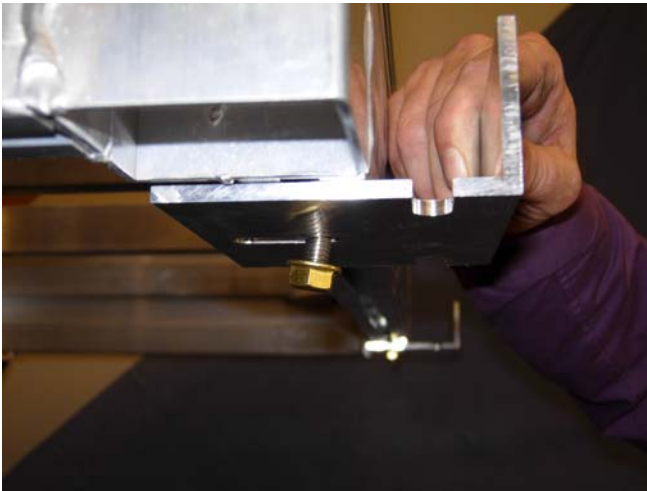


B-B



Instructions to connect 2 sections of the Roll in Dock.



Step 1:

To secure two dock sections end to end, hand tighten two connector angles to the end rail using 3 hex flange nuts and bolts for each connector angle.

Step 2:
Slide 2 3/8" carriage bolts into the bottom slots of each side rail. Insert leg bracket into one of the corner leg sockets, taking care to line up all the bolts with the slots in the bracket.



Step 3:

Place the second section of dock onto the leg bracket taking care to line up all the bolts with the slots in the bracket. Thread on 3/8" brass flange nuts and tighten securely.



Step 4:
Inside view of the leg bracket and two dock sections with the connector angles.

Step 5:
Slide a 1/2" brass square nut into the nut channel on the side post leg tube. Thread a 1/2" square head bolt into the nut through the nut channel just enough to hold it in place. Insert the leg material into the bracket and tighten the head bolt.



Step 6:
Insert foot pad into the leg material. Insert brass square nut and square headed bolt and tighten with a 1/2" wrench.